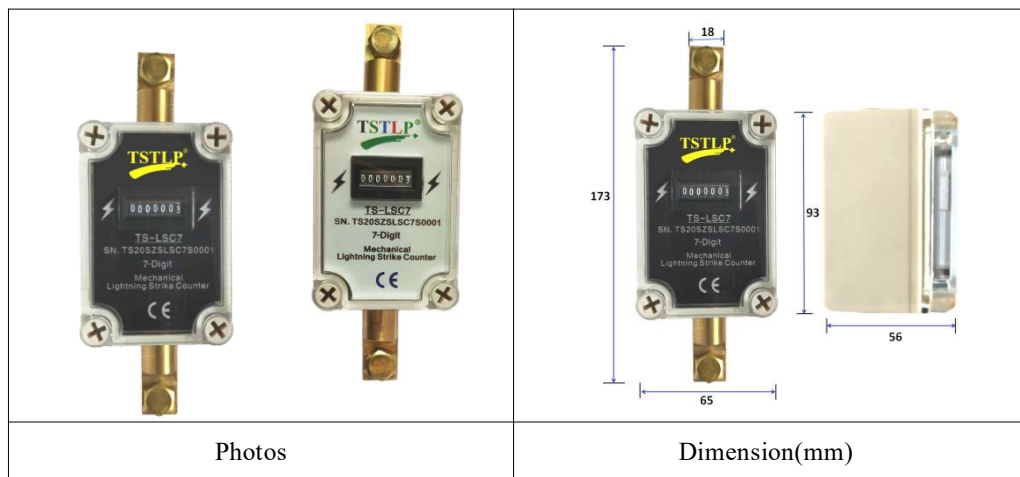




✓ TSTLP® Mechanical Lightning Strike Counter

- ❖ The lightning/surge strikes are detected and monitored by TS-LSC7 Lightning Strike Counter (including a high frequency transformer), which is able to give some information about the service necessity of the lightning protection system. By using an inductive record, the counter is able to accurately count all lightning events for a later reference.



❖ Technical Data:

Model	TS-LSC7
Response behaviour of impulse current	>2kA, rise time 8-10µs
Sequence of impulse	> 1s
7-Digit Display	0 ~ 9999999
Power supply (NO battery)	Passive power supply
Operating temperature range	-10°C ~ +50°C
Mounting on	Screw fixed installation
Enclosure Material	Gray thermoplastic, UL94-V0, IP65
Relative humidity	≤ 95% (25°C)
Accessories	1. Lugs; 2- M8x16 Screws OR M8x30 Screws
Compliance	CE (LVD, EMC & RoHS)

❖ Main Characters

- ✓ Manufactured according to IP65 protection level
- ✓ Non-Resettable
- ✓ Currents detected from 2 to 220kA
- ✓ **Mechanical** Strike Counter with 7-digit
- ✓ **Self powered and does not require the use of a battery or any external power source.**
- ✓ Serial Counter
- ✓ Easy Mounting

❖ Installation instruction

The lightning strike counter will be fixed to the earthing cable by screws.

Install with Copper Cable:

Screw one end of the accessories M8x16 galvanized Copper Lugs inside both ears of the counter, and input the copper cable to the other side of the lug and fasten by special tools.

Install with Copper Tape:

- Screw** the M8x30 copper screws inside both the ears of the counter to the horizontal position of the copper tape surface, use marker to **record** position where needs to be **drilled**.
- Drill HOLES** with M7 bit
- Use M8x1.25 screw tap for **tapping**.
- Fix the counter with copper tape.

